

MADISON VALLEY EXPEDITIONS



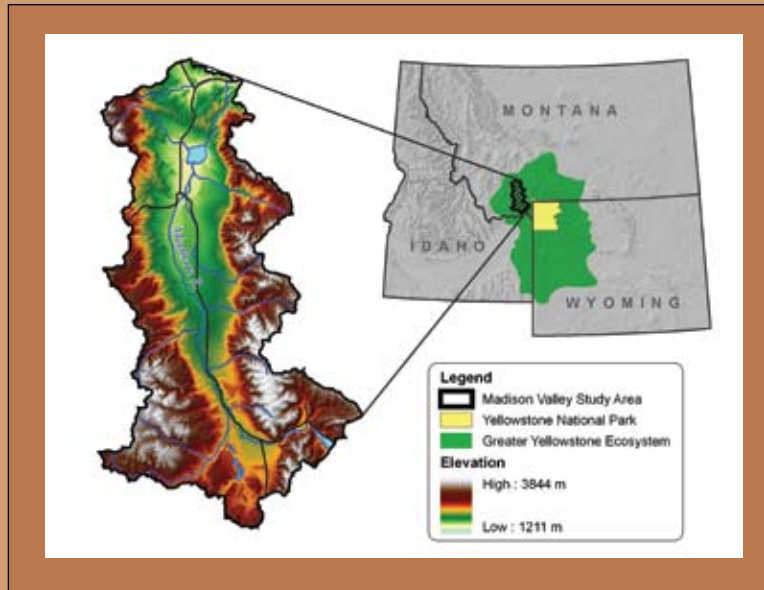
Experience
The New Wild West

EXPERIENCE...

Come enjoy time in one of the most beautiful places on Earth, the Madison Valley. Guests will enjoy wildlife viewing and photography opportunities, bird watching of hundreds of species of raptors and songbirds, spring wildlife migration of big game, as well as archeology, geography and geology tours – all on private lands not accessible to the public.

Madison Valley Expeditions offers exclusive access to private ranches in the majestic Madison Valley of southwest Montana. Working closely with valley ranchers, Madison Valley Expeditions presents this exclusive offering to guests. These ranchers wish to share the uniqueness of the valley with guests seeking to enjoy the beauty and learn about the valley's wildlife abundance, scenery, archeological record, and rich culture.



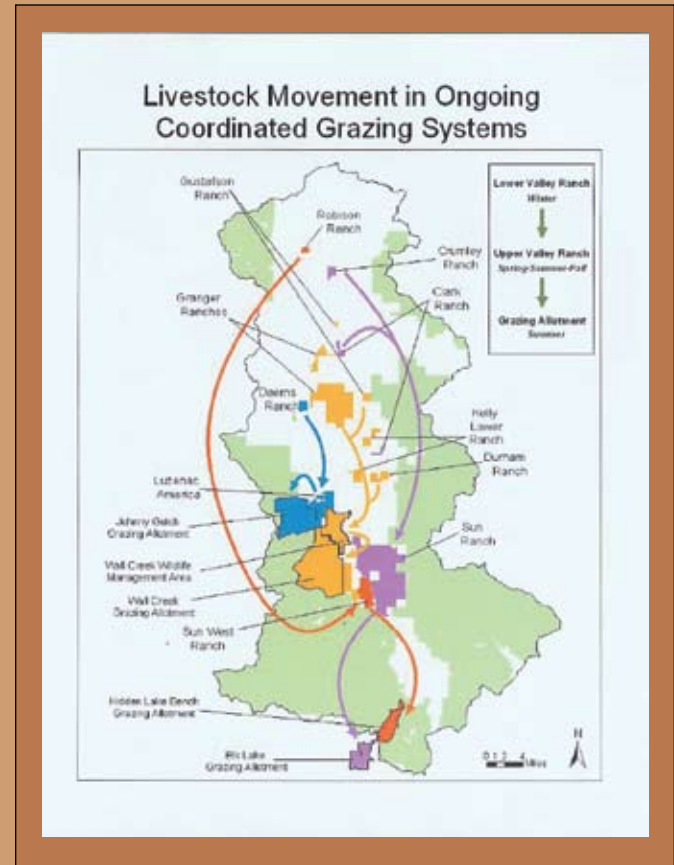


...THE MADISON VALLEY

Lying adjacent to the northwest corner of Yellowstone National Park, the 925,000-acre Madison Valley is a place of natural splendor with spectacular scenery and an abundance of wildlife found few places in the United States. The area still contains most of the wildlife species present in the valley when the first Europeans explored the region in the 19th century. Today, the valley still boasts such icons of wild places as wild carnivores like grizzly bears, wolves, and wolverine; abundant herds of elk, and migrating pronghorn antelope. The Madison River supports a blue ribbon trout fishery that attracts anglers from around the world. In addition, about 36% of private land is currently under conservation easements, ranking it the single greatest concentration of easements in Montana and once again reflecting the strong commitment residents have toward protecting their open space and wildlife heritage.

MADISON VALLEY RANGLANDS GROUP AND THE VALLEY'S HISTORY OF COLLABORATION

The Madison Valley is home to the Madison Valley Ranchlands Group (MVRG), a 501 (c) 3 not-for-profit organization. Formed in 1996 by local ranchers, the organization's purpose is to keep the ranching way of life viable by protecting open space for productive agriculture, wildlife habitat, recreation, and watershed management. MVRG, through its various working committees, has a history of bringing people together to discuss issues surrounding the management of natural resources. This collaborative process has created a forum whereby those interested in the valley may express their concerns and ideas for promoting the valley's wellbeing. MVRG's committees include those focused on noxious weeds, wildlife, and growth. Further, MVRG pioneered a coordinated grazing program with the Natural Resources Conservation Service and Montana State University where livestock move across the valley in an effort to reduce the winter feed bill, improve rangeland health, and improve wildlife habitat.



EXCLUSIVE ACCESS TO RANCHES

Madison Valley Expeditions is a wholly owned subsidiary of the Madison Valley Ranchlands Group. The business is designed to celebrate the valley's natural amenities by allowing guests access to private ranchlands that they otherwise could not reach. In turn, ranchers are paid by the business for that access. The additional revenue will help ranchers stay in business, thereby promoting open space and habitat that makes the valley so special. Thus, in a valley rich in ecological abundance and conservation practices, the presence of guests will further contribute to open space and wildlife habitat.





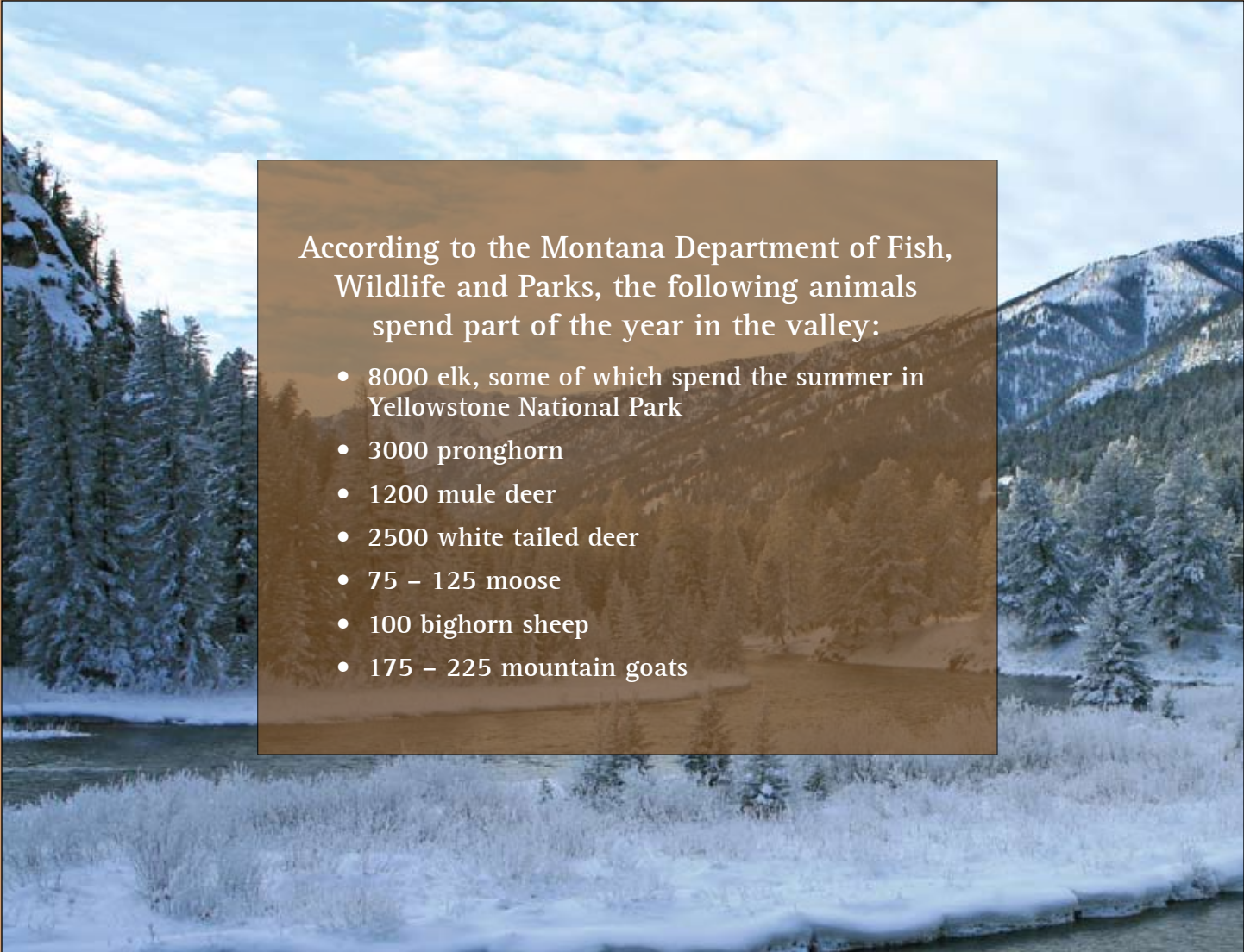
WILDLIFE VIEWING OPPORTUNITIES

If you had the job of building winter habitat for wildlife, you would build the Madison Valley. Windswept benches lying between the Madison and Gravelly mountain ranges offer significant forage for many species of big game. Bisected by the Madison River and its many tributaries, the valley's 925,000 acres are the home of ecological abundance.

Additionally, large carnivores such as wolverine, coyotes, wolves, black bears, and grizzly bears now call the Madison home. Spectacular waterfowl such as Canada and snow geese, trumpeter swans, and sandhill cranes migrate through the Madison. Many of these can be seen with the naked eye on any given day.

Valley ranchers are willing to allow access to Madison Valley Expeditions guests. Accomplished naturalists will take guests to view wildlife and celebrate the valley's natural amenities.

Please note: the Madison is not a zoo! These are not domesticated animals, but are wild animals living in their native environment. Certain safety requirements will be adhered to by all guests. Further, wild animals roam where they wish, and may not always be visible.



According to the Montana Department of Fish,
Wildlife and Parks, the following animals
spend part of the year in the valley:

- 8000 elk, some of which spend the summer in Yellowstone National Park
- 3000 pronghorn
- 1200 mule deer
- 2500 white tailed deer
- 75 – 125 moose
- 100 bighorn sheep
- 175 – 225 mountain goats



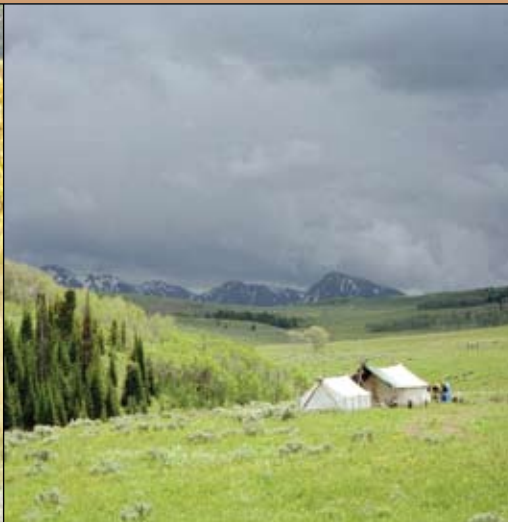
WILDLIFE MIGRATION

Many of the big game animals that winter in the Madison Valley begin their journey to high elevation grazing ranges during the time period from April through June. These include deer, pronghorn antelope, and elk many of which also give birth to their young at the same time.

Naturalists will escort guests to private ranches to view this migration first hand.

BIRDING

Montana Audubon has identified the Madison Valley as an Important Bird Area. Known for its abundance of raptors, the Madison also serves as flyways for a variety of neo-tropical migrant songbirds. Guests will have the opportunity to view these migrants along riparian corridors on many tributaries of the Madison River.



RANCHING AND CONSERVATION

The valley's diverse ranching community has seen significant change in recent years. These include rapidly escalating land values, newcomers buying ranches, the introduction of the wolf, swelling wildlife populations, wildlife disease, and drought. Formation of the Madison Valley Ranchlands Group has helped ranchers deal with such rapid change. Guests will see firsthand how 21st century ranchers run livestock in Greater Yellowstone and manage these diverse issues day-by-day.

ARCHEOLOGY, GEOGRAPHY, AND GEOLOGY TOURS

The valley is home to archeological jewels such as an effigy site, vision quest site, kill points, teepee rings, and other artifacts dating back as far as 10,000 years. Guests have the opportunity to see these ancient wonders, learn about how people of that time lived, and contemplate the meaning of these relics.

ENNIS, MONTANA

Known as the fly fishing capital of the world, Ennis is the center for activities in the valley. Each year, a Fly Fishing Festival is hosted in September. The town is also home of the Ennis National Fish Hatchery, which propagates six strains of rainbow trout that produce 23 million eggs a year for stocking throughout the United States.

Ennis is surrounded by three beautiful mountain ranges: the Madison Range, the Gravelly Range, and the Tobacco Root Mountains. In addition to its majestic mountain view, Ennis also offers access to some of the finest river locations in the state by way of the picturesque Madison River. Also, just west of Ennis lie the famed western towns of Virginia City and Nevada City.

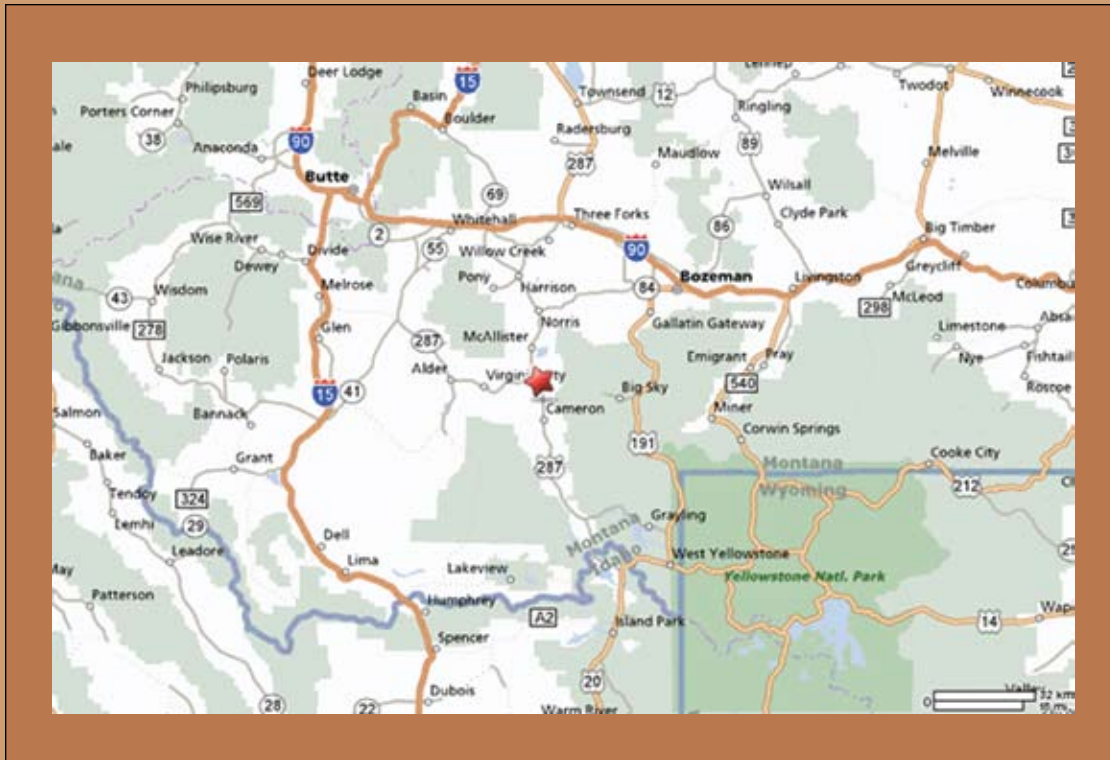
Ennis is a good-time western town and is full of cowboys, anglers and outdoor recreationists. The Western flavor is for real and there's plenty of action along the boardwalk on weekends. Visitors will find nearly 3 million acres of publicly accessible national forest lands surrounding Ennis as well as access to one of Montana's best-known trout streams, the Madison River.

The town hosts numerous hotels, guest lodges, bed and breakfasts, cabins, and camping for guest accommodations.



GETTING THERE

By Highway: From Bozeman, MT, Ennis is a 45 minute drive up the Madison River (see map). From Butte, MT, Ennis lies about 60 minutes away. From Idaho Falls, ID, one travels roughly 2.5 hours to reach Ennis. Lastly, from West Yellowstone, Ennis is about 60 minutes down river.



By Air: Ennis can be reached by air through traveling to Butte or Bozeman, MT, or Idaho Falls, ID. Transportation to the valley is required from there.



P.O. Box 330

Ennis, MT 59729

Phone: 406.682.5667

Email: todd@mvexpeditions.com